

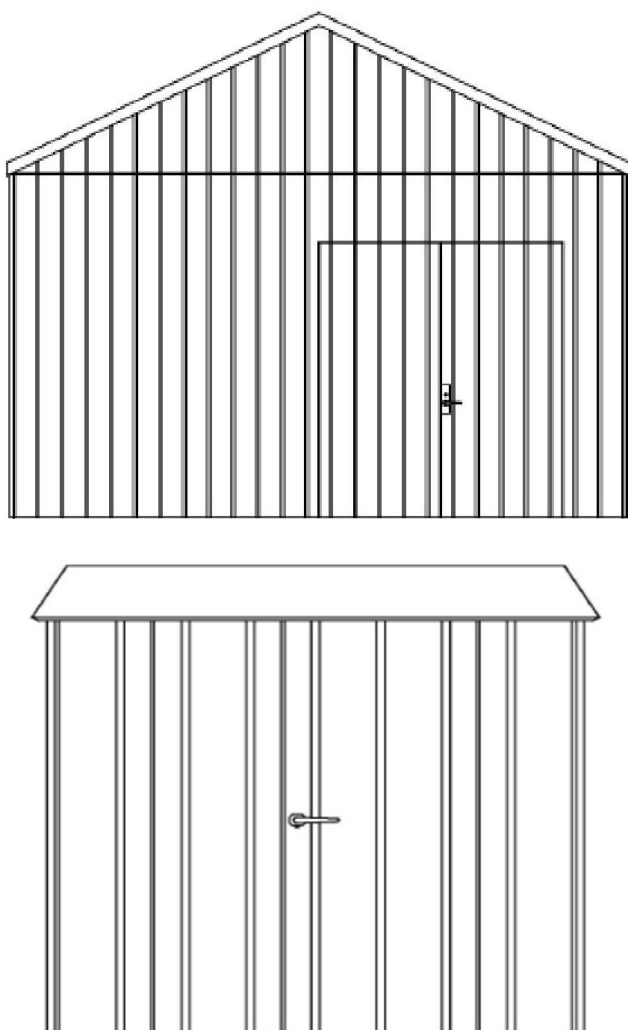


Water and industry / Technical cabins

# Technical cabins & Pump cabins

Copyright © 2021 | March

## Illustration:



## Description

Technical cabins and pump cabins are based on the same concept as secondary substations from Alfred Priess A/S. The cabins are constructed on a frame of profile pipes in 1.25 aluzinc and 600 mm in between. Outside, the houses are covered with 1.25 mm aluzinc sheets.

## Materials

**Construction:**  
Aluzinc side elements clad with profiled aluzinc sheets. Inside the cabin and roof insulated with 100 mm mineral wool.

**Modular increments:**  
200 mm

**Sides outside:**  
Profiled aluzinc sheets

**Sides inside:**  
Covered with 12mm rauma form panels or 1,25 mm aluzinc sheets.

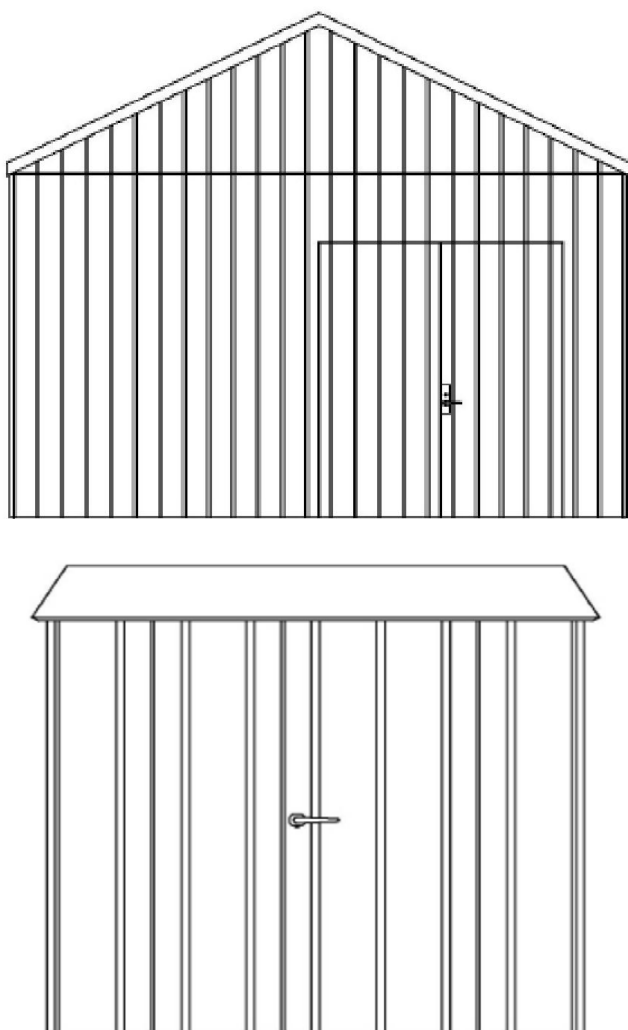
**Doors:**  
Constructed on a frame of profile pipes in 1.25 aluzinc and subsequently clad with profiled aluzinc sheets and wood look. Door hinges are galvanized and painted. Door handle and locking prepared for padlock. Hinges on doors are 5".



Water and industry / Technical cabins

# Technical cabins & Pump cabins

## Illustration:



### Gable roof

Roof with aluzinc sheet 1.5 built up with side elements 1.50 mm and collar beam in profile tube 25x50x3 galvanised. Subroof consists of 1,25 mm aluzinc.

### Standard roof

Flat roof, aluzinc sheet 1.5 built up with side elements.

### Foundation

Prefabricated concrete prefabricated concrete slab with reinforcement iron and lifting bracket.

### Color

Typically painted in green URKI-TEXT. Can alternatively be painted in a color based on the RAL color chart.

### Standard surface treatment

Frame, foundation and FU cover: Hot-dip galvanized acc. to DS/EN1461.

Sides and roof: Aluzinc plate acc. to DS/EN 10364

Painting of cabinet external: C4-H acc. to DS/EN 12944.

### Options

- Locking system such as RUKO
- Electrical installation of light, heat, cooling, electrical outlets, racks, alarm, etc.
- Gutter & windows
- Exterior facing with e.g. wood
- EDB floor, tiling/linoleum/epoxy etc.
- Can contain cloakroom, toilet etc.
- Installation of cranes