



# PRIESS WATER AND INDUSTRY

PRIESS



Our focus is on creating  
futureproof solutions

Danish quality and design since 1921

Technical cabins /

# UNIQUE SOLUTIONS

Priess A/S supplies customised solutions within technical cabins and cabinets.

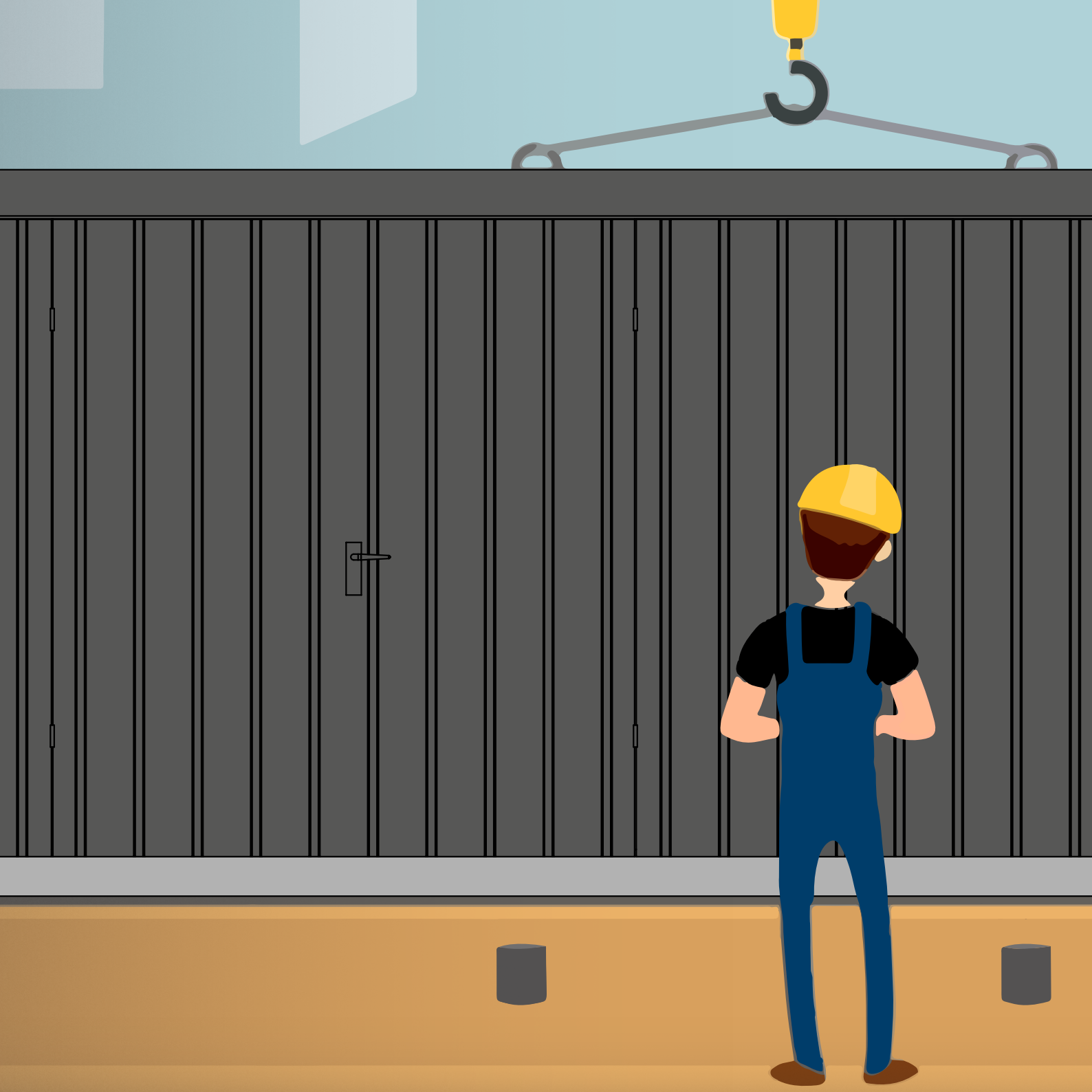
Naturally, these are designed and developed in close collaboration with the customer. The customer sets a number of requirements which we strive to meet. These can be anything from the size of the cabin or cabinet to the functions and tasks it will be expected to perform.

We place focus on developing futureproof solutions.

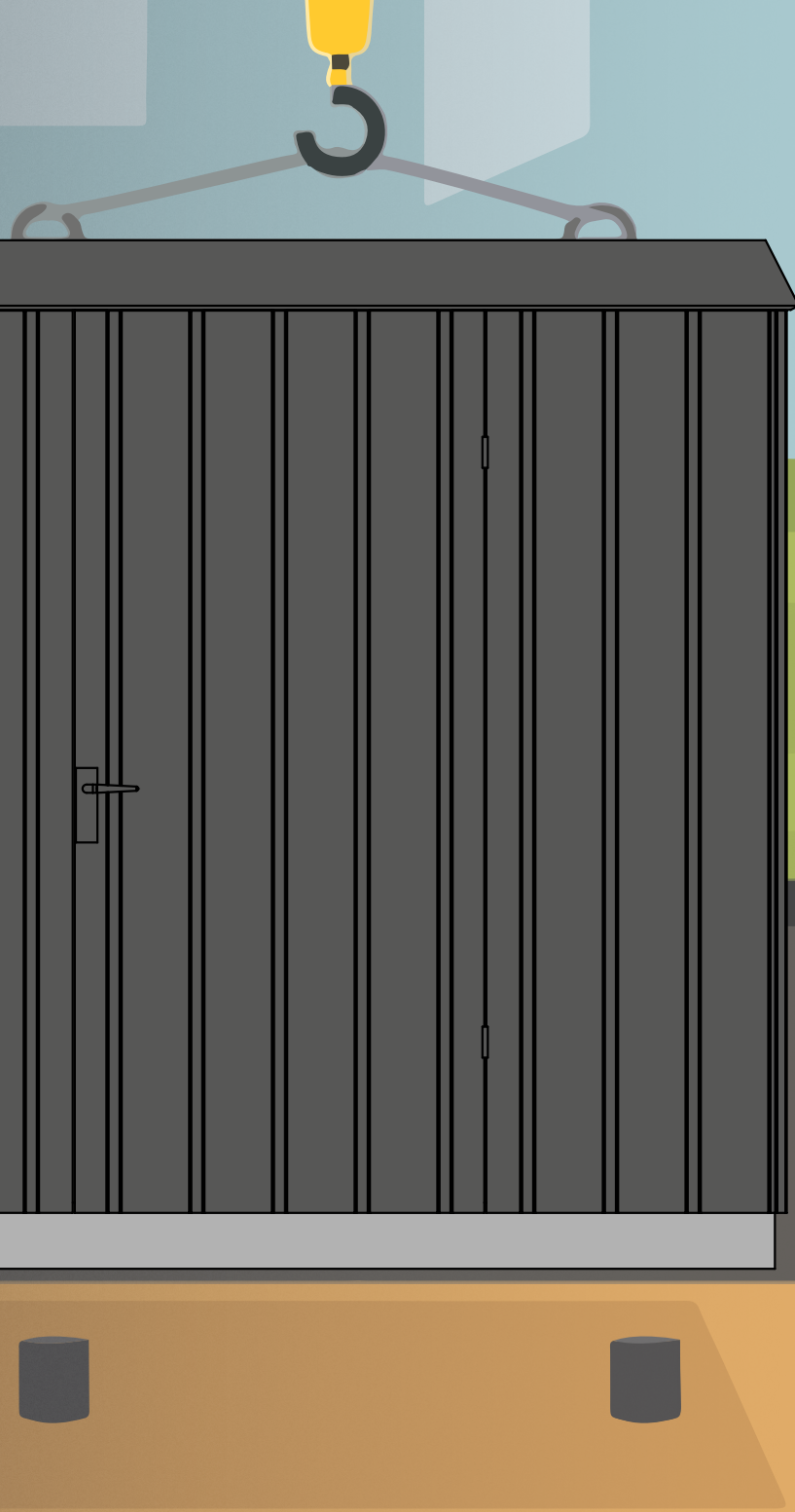


- Product development
- Customised solutions
- Close dialogue with product managers and design engineers
- Expert knowledge in the field

PRIESS







# ADVANTAGES

## 1. Knowhow

We have spent the last sixty years continuously refining and improving the cabinet concept we use today. This makes us a valuable partner.

## 2. Components of the highest quality

Priess A/S only uses recognised suppliers of components and materials of the highest quality in its products, and this boosts overall quality considerably.

## 3. Customised solutions

If your request concerns either drinking water or wastewater, we can tailor your cabinet and its components on the basis of individual needs and requirements.

## 4. Danish quality

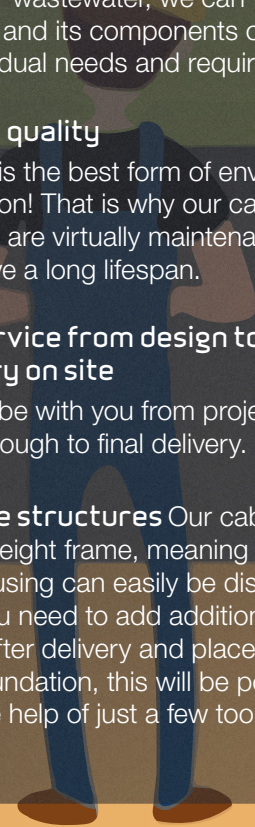
Quality is the best form of environmental protection! That is why our cabinets and stations are virtually maintenance-free and have a long lifespan.

## 5. Full service from design to delivery on site

We will be with you from project design right through to final delivery.

## 6. Flexible structures

Our cabinets have a lightweight frame, meaning the roof and housing can easily be disassembled. So if you need to add additional components after delivery and placement on your foundation, this will be possible with the help of just a few tools.



# WHY CHOOSE PRIESS?

- Flexible delivery times
- Easy to maintain
- Flexible designs/materials and colours can be adapted to the surrounding environment
- Strong and thermally insulated walls
- Noise insulation
- Secured against vandalism and burglary
- Standard delivery on concrete foundation (or alternatively on a steel frame)
- Prefabricated
- Option to equip with crane for lifting of pumps/pipes
- Modular design
- Lightweight
- Weather resistant for a long lifetime
- Individual positioning of doors with a door opening width of between 600 and 2800 mm.

